



27 Blue Anchor Lane, London, SE16 3UL

A spacious immaculately presented two bedroom apartment split over two floors and located in the heart of Bermondsey a walk away from the Underground station.

The ground floor features an open-plan reception room and modern kitchen with space to dine, a generous terrace, and stylish guest washroom. The second floor boasts a generous double bedroom with built-in storage, a second bedroom currently being used as a home office with a balcony, and a sleek family bathroom. Additional storage can be found in the hallway. Bermondsey station is moments away and a plethora of local amenities, including artisan boutique grocery shops and independent cafes and restaurants. Iconic Maltby Street Market, Bermondsey Street and Shad Thames are a short walk away.

- Generous Two Bedroom Apartment
- Open-plan Living
- Excellent Transport Links
- Surrounded by Local Amenities
- Private Balcony and Terrace

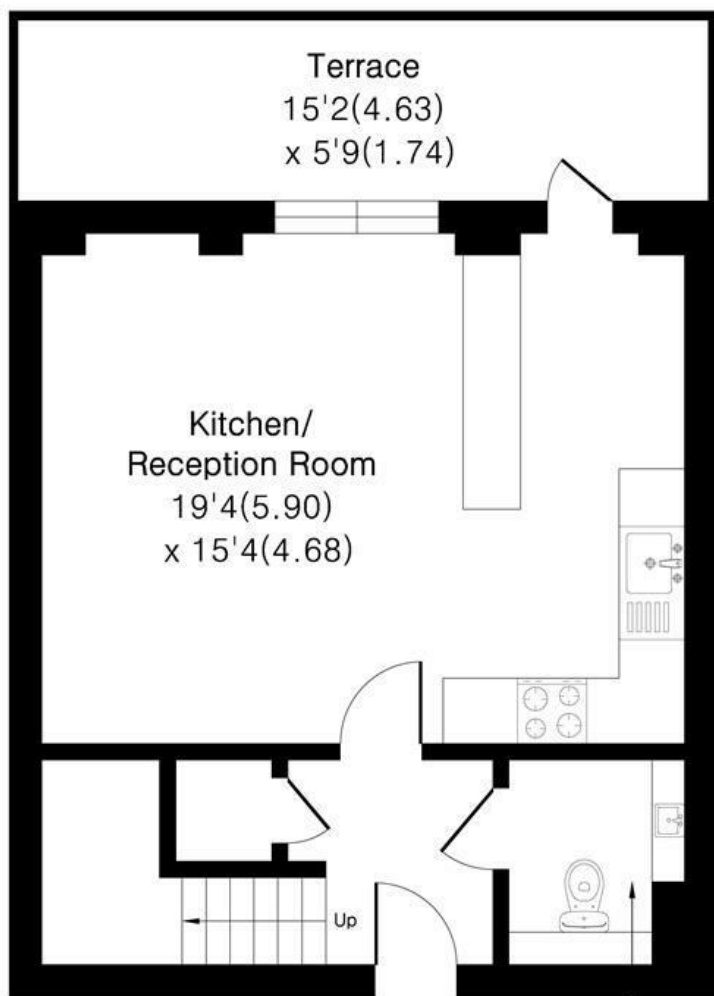
Alex & Matteo
ESTATE AGENTS

£2,350 Per month

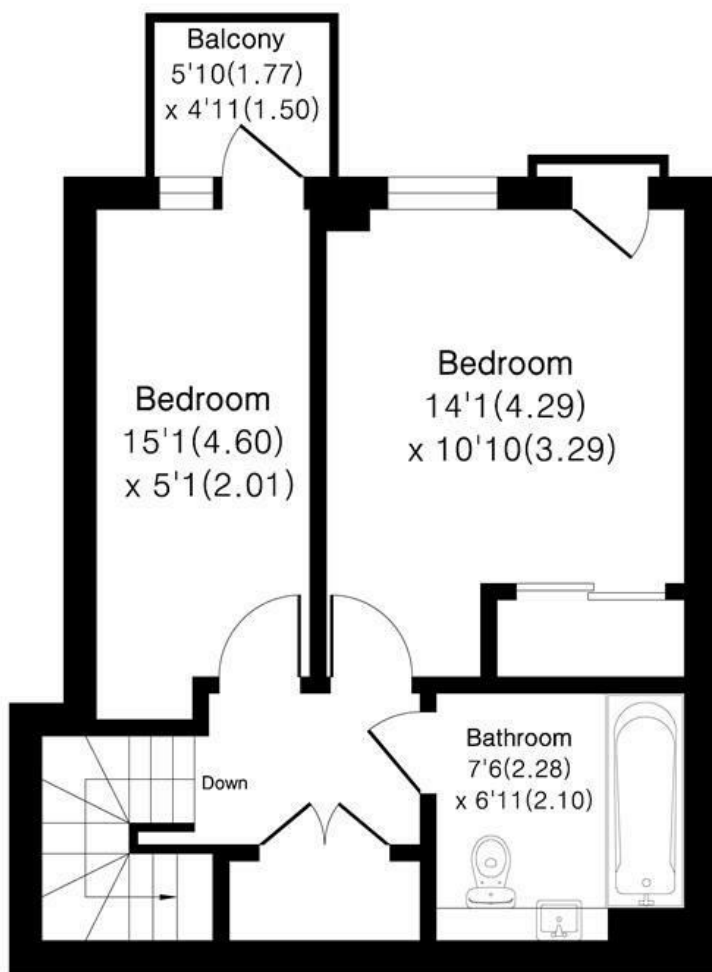


Bridgestone House SE16

Approximate Area = 827 sq ft / 77.0 sq m



Ground Floor



First Floor

Floor plan Produced in accordance with RICS Property Measurement 2nd Edition.
Incorporating International Property Measurement Standards (IPMS2 Residential).
Produced for Alex & Matteo Estate Agents.



Energy Efficiency Rating		
	Current	Potential
Very energy efficient - lower running costs		
(92 plus) A		
(81-91) B	86	86
(69-80) C		
(55-68) D		
(39-54) E		
(21-38) F		
(1-20) G		
Not energy efficient - higher running costs		
England & Wales		
EU Directive 2002/91/EC		